



Contents

- 03** — Presentation of the company
- 04** — Certified seeds of field crops
- 06** — Breeding
- 08** — Grass mixtures
- 10** — Retail packaging
- 11** — Feeding mixtures
- 12** — Commodities
- 12** — Malt
- 14** — Fertilizers and pesticides
- 15** — Certification of the company

Presentation of the company

OSEVA UNI, a.s. is one of the most significant companies in the Czech Republic dealing in complex services in agriculture. The company was established in 1991 from a former state-owned company and is now an altogether private, developing Czech company with a clear business policy and orientation. The company has its registered office in Eastern Bohemia in Choceň.



Certified seeds of field crops

The selection of varieties for the production and selling plan is a very responsible, and, at the same time, difficult process. We must ensure that we have enough seeds both qualitatively, and in terms of varieties. It is also very necessary to estimate the interest of growers in new registered varieties. Our production plan is always based on perfect knowledge of the business environment, and it of course also includes a professional estimate.

We have entered into license and sub-license contracts for the production and sale of seeds to all major domestic and foreign breeders offering their varieties in the Czech Republic. We exclusively represent some of the varieties on the Czech market.

We produce and sell seeds for the following species:

— Cereals

- Buckwheat (*Fagopyrum esculentum*)
- Common millet (*Panicum miliaceum*)
- Oats (*Avena sativa*)
- Winter and Spring barley (*Hordeum vulgare*)
- Winter rye (*Secale cereale*)
- Winter and Spring triticale (*Triticosecale*)
- Winter and Spring wheat (*Triticum aestivum*)

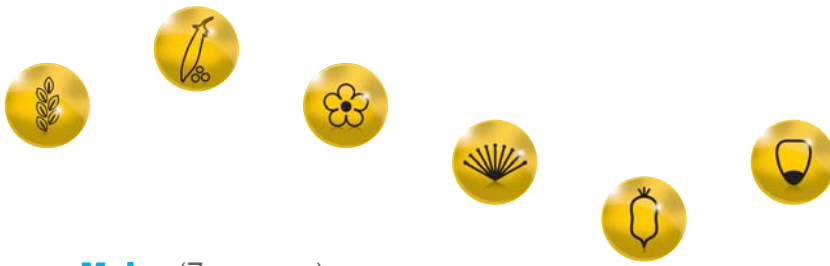
— Legumes

- Field bean (*Vicia faba*)
- Field pea (*Pisum sativum*)
- Forage pea (*Pisum sativum*)

— Oilseed and Fibre Crops

- Caraway (*Carum carvi*)
- Fibre flax, Linseed (*Linum usitatissimum*)
- Oilseed rape and Canola (*Brassica napus* var. *napus*)
- Poppy (*Papaver somniferum*)
- Sunflower (*Helianthus annuus*)
- White mustard (*Sinapis alba*)





— — **Maize** (*Zea mays*)

— — **Root Crops**

Fodder beat (*Beta vulgaris* var. *crassa*)
 Fodder cale (*Brassica oleracea* *acephala*)
 Potatoes (*Solanum tuberosum*)

— — **Clover Crops**

Alfalfa (*Medicago sativa*)
 Alsice clover (*Trifolium hybridum*)
 Birdsfoot trefoil (*Lotus corniculatus*)
 Crimson clover (*Trifolium incarnatum*)
 Persian clover (*Trifolium resupinatum*)
 Red clover (*Trifolium pratense*)
 White clover (*Trifolium repens*)

— — **Phacelia** (*Phacelia tanacetifolia*)

— — **Grasses**

Black bent (*Agrostis gigantea*)
 Cocksfoot (*Dactylis glomerata*)
 Common bent (*Agrostis capillaris*)
 Festulolium (*Festulolium*)
 Golden oatgrass (*Trisetum flavescens*)
 Hard fescue (*Festuca trachyphylla*)
 Hybrid ryegrass (*Lolium hybridum*)
 Chewings fescue (*Festuca rubra* *commutata*)
 Italian ryegrass (*Lolium multiflorum*)
 Kentucky bluegrass (*Poa pratensis*)
 Meadow fescue (*Festuca pratensis*)
 Meadow foxtail (*Alopecurus pratensis*)
 Perennial ryegrass (*Lolium perenne*)
 Sheep´s fescue (*Festuca ovina*)
 Slender creeping red fescue (*Festuca rubra* *trichophylla*)
 Strong creeping red fescue (*Festuca rubra* *rubra*)
 Tall fescue (*Festuca arundinacea*)
 Tall oatgrass (*Arrhenantherum elatius*)
 Tufted hair grass (*Deschampsia caespitosa*)
 Timothy (*Phleum pratense*)
 Westerwold ryegrass (*Lolium multiflorum* *Westerwoldicum*)

We produce the seeds on the basis of multiplication contracts with the growers. The seed preparation – i.e. drying, cleaning, treatment, packaging and certification of the seed and its subsequent shipping to the customers are done in five branches equipped with the most modern devices – Choceň, Úhřetice, Chotěboř, Chlumeč nad Cidlinou and Dětenice. The seed quality is very carefully checked by our employees during the entire production process. Thanks to the accreditation of our laboratories, we are authorized to deliver the seeds of some of the species on the basis of our own analyses and certificates.

Our everyday contact with customers from the agricultural basic industry is secured by a team of regional business agents. These employees are responsible for not only the sale of seeds, fertilizers, pesticides and purchases of commodities, but also for the production of seeds on the multiplication fields and for professional consulting services.

Breeding

Breeding is done at two breeding stations — Domoradice and Větrov. In Domoradice, we breed mainly clover crops, and in Větrov turf and forage grasses and phacelia. Our varieties are sold not only in the Czech Republic, but a number of them are also successfully sold in other countries and overseas. We closely cooperate with company Barenbrug Holland BV in breeding of grasses.

Varieties from our breeding programme:

Domoradice

Birdsfoot trefoil LOTAR

Persian clover PASAT

Red clover diploid START, SPURT, VAN

Red clover tetraploid BLIZARD, CYKLON, DOLLY, OSTRO, SPRINT, TEMPUS, VULKAN

Větrov

Forage grasses

Cocksfoot DANA (BARIDANA), VEGA (LYRA), ZORA

Golden oatgrass VĚTROVSKÝ

Meadow fescue OTAVA, PRONELA

Italian ryegrass diploid PROLOG

Italian ryegrass tetraploid PROJEKTIL

Perennial ryegrass diploid ALGOL

Perennial ryegrass tetraploid JASPIS, LONAR

Timothy BOBR, SOBOL, VĚTROVSKÝ

Westerwold ryegrass diploid PROKOP

Turf grasses

Browntop bent TENO, VÍTEK

Slender creeping red fescue MIRKA, VENDULA, VIKTORKA, TERKA

Chewings fescue ARANKA, BARBORKA, CITERA, KLÁRKA, PROTENZA

Hard fescue DOROTKA, JANA, ŠTĚPÁNKA

Perennial ryegrass diploid DOTON, FILIP, HONZÍK, JAKUB, KELT, PATRIK

Sheep's fescue LUCKA

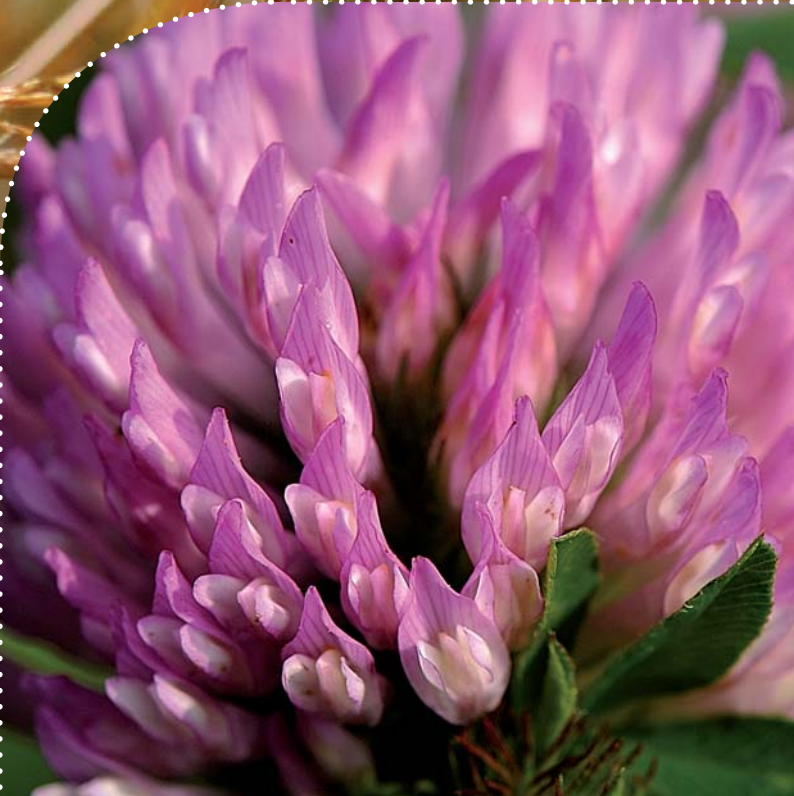
Strong creeping red fescue BLANKA, PETRUNA

Tall fescue ZUZANA

Tufted hair grass KOMETA, META, SIBIR

Phacelia VĚTROVSKÁ, PROFÁ, PROTANA, PROMOCE





Grass mixtures

Production and sale of fodder plants, including the sale of mixtures, play a very significant role in our company. All the mixtures that we offer have undergone thorough testing in our breeding stations. In addition to the standard offered mixtures, we are also able to prepare mixtures according to specific requirements of our customers (mixtures made to order).

We produce and sell three basic groups of mixtures:

Agricultural mixtures

- Pasture mixtures
- Meadow mixtures
- Grass and clover mixtures

Turf mixtures

- Ornamental park mixtures (decorative purposes)
- Recreation park mixtures (decorative and recreation purposes)
- Sports mixtures
- Landscape mixtures (roadside verges and slopes, anti-erosion embankments, orchard middle rows, recovering of landfills)
- Special mixtures (pasture for horses, race courses, protected landscape areas, forest game parks etc.)

Professional mixtures

- Sports mixtures
- Golf mixtures
- Recreation mixtures
- Landscape mixtures
- Ornamental mixtures

The mixtures for professionals are prepared at the breeding station in Větrov. The VV-mixtures reflect the know-how of our renowned professionals. These mixtures include the best foreign and domestic turf varieties. You can find our VV-mixtures in a number of golf courses or first-league football fields.







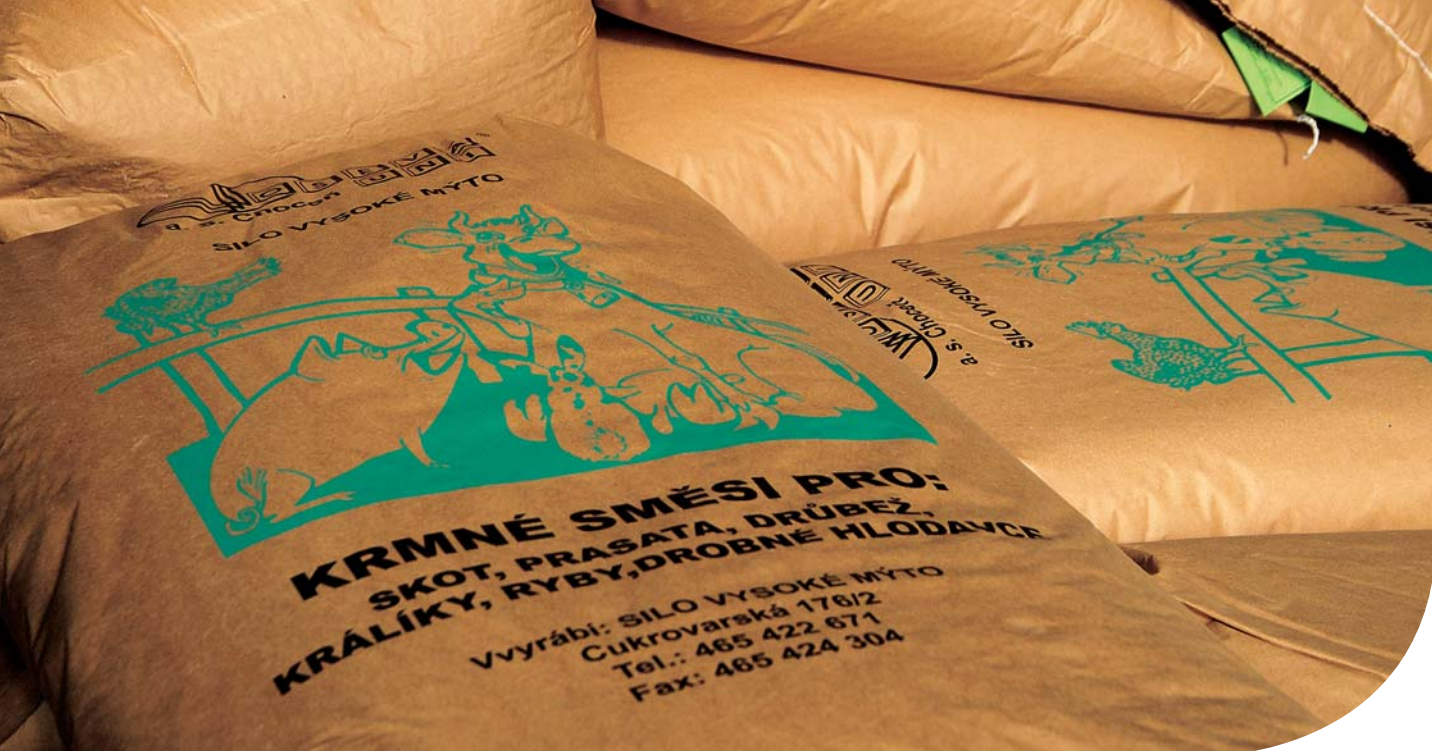
Retail packaging

The offer of our products in retail packaging is meant for customers of gardening goods stores – from supermarkets to small town stores. Customers may also buy our products at our branches at company stores.

Products in retail packaging:

- Ornamental grass mixtures
- Recreation grass mixtures
- Sports mixtures
- Landscape mixtures
- Forage grass mixtures
- Mixtures for green fertilization
- Phacelia
- Fodder beat
- Feeding mixtures for small birds

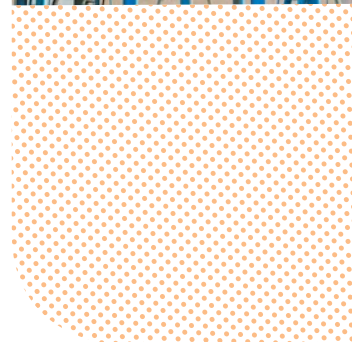
Customers may choose from a wide scale of packaging – from 0.35 kg, 0.5 kg, 1.0 kg, 2.0 kg, 4.0 kg, 10 kg to 25 kg. We pack the products into polypropylene foil, paper boxes and paper bags.



Feeding mixtures

Our branch Silo in Vysoké Mýto offers:

- Production and sale of complete and complementary feeding mixtures for livestock, including special mixtures
- Individual feeding mixtures on request
- Qualified professional feeding service
- Sale of Soya and Oilseed rape extracted meals rapeseeds
- Sale of feeding mixtures in the company store (including retail packaging)





Commodities

To our customers, the growers, we offer:

- Purchase of commodities
- Cleaning, drying and storing of commodities
- Guarantee of top quality cleaning of commodities on modern efficient technologies and special lines
- Analyses of important quality parameters of commodities (nitrogenous substances, oil content etc.)
- Long-term contracts with the possibility to provide financial advance payments before harvest

Malt

The malting plant MORAVAMALT in Brodek u Přerova with its yearly production capacity of 17,600 tons of malt and an intake of 22,000 tons of barley produces and supplies bulk and packed “Czech malt” for domestic and foreign partners. The malting plant is located in one of the best areas for growing of spring barley in the Czech Republic — Central Moravia where the growing of high-quality spring malting barley became a tradition.

Today, MORAVAMALT is a modern malting plant, which is able to fulfil all quality requirements for the malt supplied to domestic and foreign breweries.



Fertilizers and pesticides

Offer of mineral fertilizers

- Supplies of mineral fertilizers in Big Bags: ammonium saltpetre, urea, ammonium nitrate and combined fertilizers (NP, NPK)



Offer of pesticides

- Sale of the complete range of registered pesticides, including qualified consulting service

Offer of company PRP products

- PRP SOL: activator of the soil's vital functions
- PRP EBV: stimulator of the plant's vital functions
- PRP FIX: activator of biological transformation of farm fertilizers



Certification of the company

Accredited seed laboratory

Our accredited seed laboratory in Havlíčkův Brod issues certificates of the following species: cereals, legumes, oilseed crops, clover crops, grasses and phacelia. Thanks to the accreditation we can realize quick and cost-effective deliveries of the seeds to our customers with our own certificates without many time delays due to analyses made in external laboratories.

ISO 9001:2009

Our aim is a satisfied customer. In order to guarantee maximum satisfaction of our customers' requirements, we place great emphasis on the personal responsibility of each of our employees in all of the processes that are underway within the company. This personal responsibility is the key to the quality management system that we implemented in 2002 and for which we obtained an ISO 9001:2009 Quality Certificate. This certificate is applicable to the production and sale of seeds, breeding of forage species including the sale and production of grass mixtures, and the business with agricultural commodities from plant production.

ISO 22000:2006

With respect to the more and more strict requirements on food and feed safety, we extended the company certification with the ISO 22000:2006 (HACCP) certificate in 2008, which applies to the processing and sale of agricultural commodities from plant production and to the production and sale of feeding mixtures, including laboratory analyses.

ISCC "International Sustainability and Carbon Certification"

Based on the implementation of EC Directive No. 2009/28/ES, we obtained certification from SGS Germany GmbH in December 2010, which allows us legislatively unlimited purchase and sale of sustainable biomass – Oilseed rape, on the EU markets.





OSEVA UNI, a. s.

Na Bílé 1231 — 565 14 Choceň — Czech Republic

tel.: +420 465 467 525 — fax: +420 465 471 388

e-mail: chocen@osevauni.cz

www.osevauni.cz

